

Greater Dublin Drainage Project

Environmental Impact Assessment Report Addendum

Volume 6A Proposed Project Photomontages

October 2023

INDEX

Viewpoint 1 - Existing View + Outline View
Viewpoint 1 - Montage View + Mitigated View

Viewpoint 2 - Existing View + Outline View
Viewpoint 2 - Montage View + Mitigated View

Viewpoint 3 - Existing View + Outline View
Viewpoint 3 - Montage View + Mitigated View

Viewpoint 4 - Existing View + Outline View
Viewpoint 4 - Montage View + Mitigated View

Viewpoint 5 - Existing View + Outline View
Viewpoint 5 - Montage View + Mitigated View

Viewpoint 6 - Existing View + Outline View
Viewpoint 6 - Montage View + Mitigated View

Viewpoint 7 - Existing View + Outline View
NB - There is no Montage, Mitigated Montage

Viewpoint 8 - Existing View + Outline View
Viewpoint 8 - Montage View + Mitigated View

Viewpoint 9 - Existing View + Outline View
Viewpoint 9 - Montage View + Mitigated View

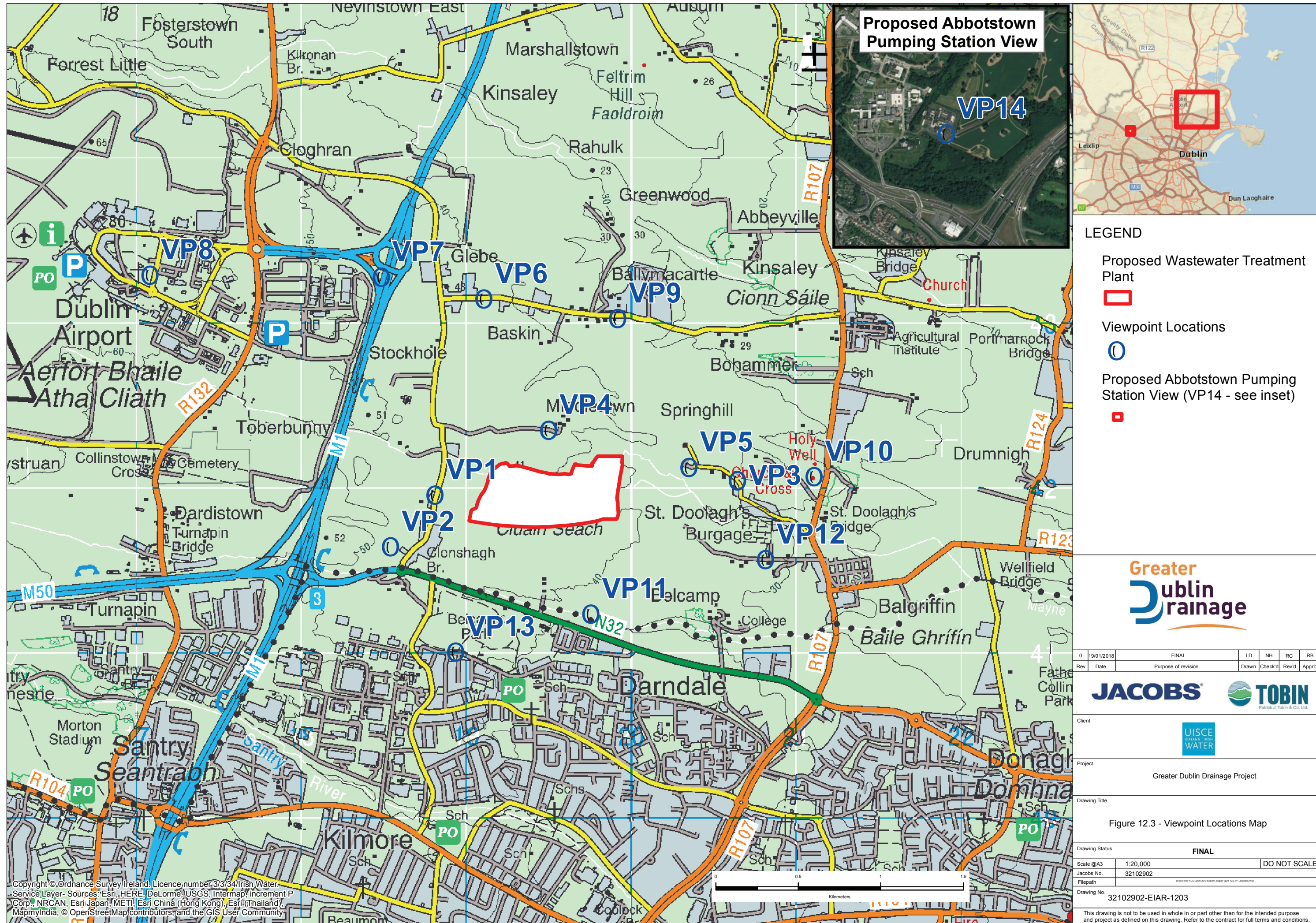
Viewpoint 10 - Existing View + Outline View
NB - There is no Montage, Mitigated Montage

Viewpoint 11 - Existing View + Outline View
Viewpoint 11 - Montage View + Mitigated View

Viewpoint 12 - Existing View + Outline View
Viewpoint 12 - Montage View + Mitigated View

Viewpoint 13 - Existing View + Outline View
NB - There is no Montage, Mitigated Montage

Viewpoint 14 - Existing View + Outline View
Viewpoint 14 - Montage View + Mitigated View

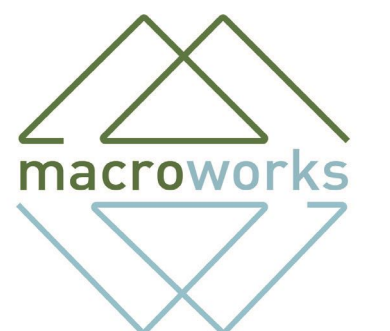




These are 80° panoramic montages captured and presented in accordance with the guidance set by the British Landscape Institute 2011 - Advice Note 01/11.

To view these panoramas on a flat surface one must move from left to right along its length whilst maintaining a perpendicular viewing direction and the specified correct viewing distance of 30cm. To see this entire panoramic scene in reality would necessitate turning one's head through 40°.

Easting (ITM):	318829	Lens:	50mm / Full Frame Sensor	Date:	20/10/2022
Northing (ITM):	241973	Camera:	Canon 1-D Mark II digital SLR	Time:	10:47
Direction of View:	100° E of Grid North	Camera Height:	1.7m Above Ground Level		
Angle of View:	80°				





These are 80° panoramic montages captured and presented in accordance with the guidance set by the British Landscape Institute 2011 - Advice Note 01/11.

To view these panoramas on a flat surface one must move from left to right along its length whilst maintaining a perpendicular viewing direction and the specified correct viewing distance of 30cm. To see this entire panoramic scene in reality would necessitate turning one's head through 40°.

Easting (ITM):	318829	Lens:	50mm / Full Frame Sensor	Date:	20/10/2022
Northing (ITM):	241973	Camera:	Canon 1-D Mark II digital SLR	Time:	10:47
Direction of View:	100° E of Grid North	Camera Height:	1.7m Above Ground Level		
Angle of View:	80°				



Existing View



Outline View

indicating physical position and scale of the proposed development irrespective of screening



These are 80° panoramic montages captured and presented in accordance with the guidance set by the British Landscape Institute 2011 - Advice Note 01/11.

To view these panoramas on a flat surface one must move from left to right along its length whilst maintaining a perpendicular viewing direction and the specified correct viewing distance of 30cm. To see this entire panoramic scene in reality would necessitate turning one's head through 40°.

Easting (ITM):	318518	Lens:	50mm / Full Frame Sensor	Date:	20/10/2022
Northing (ITM):	241655	Camera:	Canon 1-D Mark II digital SLR	Time:	11:36
Direction of View	78° E of Grid North	Camera Height:	1.7m Above Ground Level		
Angle of View:	80°				



Montage View
Pre-Mitigation



Montage View
With Mitigation Established



These are 80° panoramic montages captured and presented in accordance with the guidance set by the British Landscape Institute 2011 - Advice Note 01/11.

To view these panoramas on a flat surface one must move from left to right along its length whilst maintaining a perpendicular viewing direction and the specified correct viewing distance of 30cm. To see this entire panoramic scene in reality would necessitate turning one's head through 40°.

Easting (ITM):	318518	Lens:	50mm / Full Frame Sensor	Date:	20/10/2022
Northing (ITM):	241655	Camera:	Canon 1-D Mark II digital SLR	Time:	11:36
Direction of View	78° E of Grid North	Camera Height:	1.7m Above Ground Level		
Angle of View:	80°				





These are 80° panoramic montages captured and presented in accordance with the guidance set by the British Landscape Institute 2011 - Advice Note 01/11.

To view these panoramas on a flat surface one must move from left to right along its length whilst maintaining a perpendicular viewing direction and the specified correct viewing distance of 30cm. To see this entire panoramic scene in reality would necessitate turning one's head through 40°.

Easting (ITM):	320653	Lens:	50mm / Full Frame Sensor	Date:	20/10/2022
Northing (ITM):	242030	Camera:	Canon 1-D Mark II digital SLR	Time:	09:42
Direction of View	101° W of Grid North	Camera Height:	1.7m Above Ground Level		
Angle of View:	80°				



Existing View



Outline View
 indicating physical position and scale of the proposed development irrespective of screening



These are 120° panoramic montages captured and presented in accordance with the guidance set by the British Landscape Institute 2011 - Advice Note 01/11.

To view these panoramas on a flat surface one must move from left to right along its length whilst maintaining a perpendicular viewing direction and the specified correct viewing distance of 30cm. To see this entire panoramic scene in reality would necessitate turning one's head through 80°.

Easting (ITM):	319478	Lens:	50mm / Full Frame Sensor	Date:	22/11/2015
Northing (ITM):	242347	Camera:	Canon 1-D Mark II digital SLR	Time:	14:36
Direction of View:	169°W of Grid North	Camera Height:	1.7m Above Ground Level		
Angle of View:	120°				



Montage View
Pre-Mitigation



Montage View
With Mitigation Established



These are 120° panoramic montages captured and presented in accordance with the guidance set by the British Landscape Institute 2011 - Advice Note 01/11.

To view these panoramas on a flat surface one must move from left to right along its length whilst maintaining a perpendicular viewing direction and the specified correct viewing distance of 30cm. To see this entire panoramic scene in reality would necessitate turning one's head through 80°.

Easting (ITM):	319478	Lens:	50mm / Full Frame Sensor	Date:	22/11/2015
Northing (ITM):	242347	Camera:	Canon 1-D Mark II digital SLR	Time:	14:36
Direction of View:	169°W of Grid North	Camera Height:	1.7m Above Ground Level		
Angle of View:	120°				



Existing View



Outline View
 indicating physical position and scale of the proposed development irrespective of screening



These are 80° panoramic montages captured and presented in accordance with the guidance set by the British Landscape Institute 2011 - Advice Note 01/11.

To view these panoramas on a flat surface one must move from left to right along its length whilst maintaining a perpendicular viewing direction and the specified correct viewing distance of 30cm. To see this entire panoramic scene in reality would necessitate turning one's head through 40°.

Easting (ITM):	320354	Lens:	50mm / Full Frame Sensor	Date:	20/10/2022
Northing (ITM):	242127	Camera:	Canon 1-D Mark II digital SLR	Time:	09:52
Direction of View	110° W of Grid North	Camera Height:	1.7m Above Ground Level		
Angle of View:	80°				



Montage View
Pre-Mitigation



Montage View
With Mitigation Established



These are 80° panoramic montages captured and presented in accordance with the guidance set by the British Landscape Institute 2011 - Advice Note 01/11.

To view these panoramas on a flat surface one must move from left to right along its length whilst maintaining a perpendicular viewing direction and the specified correct viewing distance of 30cm. To see this entire panoramic scene in reality would necessitate turning one's head through 40°.

Easting (ITM):	320354	Lens:	50mm / Full Frame Sensor	Date:	20/10/2022
Northing (ITM):	242127	Camera:	Canon 1-D Mark II digital SLR	Time:	09:52
Direction of View	110° W of Grid North	Camera Height:	1.7m Above Ground Level		
Angle of View:	80°				



Existing View



Outline View

indicating physical position and scale of the proposed development irrespective of screening



These are 80° panoramic montages captured and presented in accordance with the guidance set by the British Landscape Institute 2011 - Advice Note 01/11.

To view these panoramas on a flat surface one must move from left to right along its length whilst maintaining a perpendicular viewing direction and the specified correct viewing distance of 30cm. To see this entire panoramic scene in reality would necessitate turning one's head through 40°.

Easting (ITM):	319114	Lens:	50mm / Full Frame Sensor	Date:	20/10/2022
Northing (ITM):	243152	Camera:	Canon 1-D Mark II digital SLR	Time:	10:35
Direction of View:	161° E of Grid North	Camera Height:	1.7m Above Ground Level		
Angle of View:	80°				



Montage View
Pre-Mitigation



Montage View
With Mitigation Established



These are 80° panoramic montages captured and presented in accordance with the guidance set by the British Landscape Institute 2011 - Advice Note 01/11.

To view these panoramas on a flat surface one must move from left to right along its length whilst maintaining a perpendicular viewing direction and the specified correct viewing distance of 30cm. To see this entire panoramic scene in reality would necessitate turning one's head through 40°.

Easting (ITM):	319114	Lens:	50mm / Full Frame Sensor	Date:	20/10/2022
Northing (ITM):	243152	Camera:	Canon 1-D Mark II digital SLR	Time:	10:35
Direction of View:	161° E of Grid North	Camera Height:	1.7m Above Ground Level		
Angle of View:	80°				





These are 80° panoramic montages captured and presented in accordance with the guidance set by the British Landscape Institute 2011 - Advice Note 01/11.

To view these panoramas on a flat surface one must move from left to right along its length whilst maintaining a perpendicular viewing direction and the specified correct viewing distance of 30cm. To see this entire panoramic scene in reality would necessitate turning one's head through 40°.

Easting (ITM):	318485	Lens:	50mm / Full Frame Sensor	Date:	20/10/2022
Northing (ITM):	243278	Camera:	Canon 1-D Mark II digital SLR	Time:	13:20
Direction of View:	149° E of Grid North	Camera Height:	1.7m Above Ground Level		
Angle of View:	80°				





These are 80° panoramic montages captured and presented in accordance with the guidance set by the British Landscape Institute 2011 - Advice Note 01/11.

To view these panoramas on a flat surface one must move from left to right along its length whilst maintaining a perpendicular viewing direction and the specified correct viewing distance of 30cm. To see this entire panoramic scene in reality would necessitate turning one's head through 40°.

Easting (ITM):	317080	Lens:	50mm / Full Frame Sensor	Date:	20/10/2022
Northing (ITM):	243284	Camera:	Canon 1-D Mark II digital SLR	Time:	13:00
Direction of View	120° E of Grid North	Camera Height:	1.7m Above Ground Level		
Angle of View:	80°				



Montage View
Pre-Mitigation



Montage View
With Mitigation Established



These are 80° panoramic montages captured and presented in accordance with the guidance set by the British Landscape Institute 2011 - Advice Note 01/11.

To view these panoramas on a flat surface one must move from left to right along its length whilst maintaining a perpendicular viewing direction and the specified correct viewing distance of 30cm. To see this entire panoramic scene in reality would necessitate turning one's head through 40°.

Easting (ITM):	317080	Lens:	50mm / Full Frame Sensor	Date:	20/10/2022
Northing (ITM):	243284	Camera:	Canon 1-D Mark II digital SLR	Time:	13:00
Direction of View	120° E of Grid North	Camera Height:	1.7m Above Ground Level		
Angle of View:	80°				

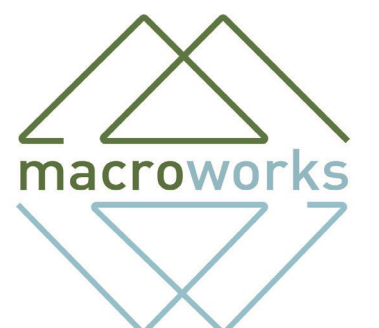




These are 80° panoramic montages captured and presented in accordance with the guidance set by the British Landscape Institute 2011 - Advice Note 01/11.

To view these panoramas on a flat surface one must move from left to right along its length whilst maintaining a perpendicular viewing direction and the specified correct viewing distance of 30cm. To see this entire panoramic scene in reality would necessitate turning one's head through 40°.

Easting (ITM):	319922	Lens:	50mm / Full Frame Sensor	Date:	20/10/2022
Northing (ITM):	243046	Camera:	Canon 1-D Mark II digital SLR	Time:	10:25
Direction of View:	170° W of Grid North	Camera Height:	1.7m Above Ground Level		
Angle of View:	80°				



Montage View
Pre-Mitigation



Montage View
With Mitigation Established



These are 80° panoramic montages captured and presented in accordance with the guidance set by the British Landscape Institute 2011 - Advice Note 01/11.

To view these panoramas on a flat surface one must move from left to right along its length whilst maintaining a perpendicular viewing direction and the specified correct viewing distance of 30cm. To see this entire panoramic scene in reality would necessitate turning one's head through 40°.

Easting (ITM):	319922	Lens:	50mm / Full Frame Sensor	Date:	20/10/2022
Northing (ITM):	243046	Camera:	Canon 1-D Mark II digital SLR	Time:	10:25
Direction of View	170° W of Grid North	Camera Height:	1.7m Above Ground Level		
Angle of View:	80°				





These are 80° panoramic montages captured and presented in accordance with the guidance set by the British Landscape Institute 2011 - Advice Note 01/11.

To view these panoramas on a flat surface one must move from left to right along its length whilst maintaining a perpendicular viewing direction and the specified correct viewing distance of 30cm. To see this entire panoramic scene in reality would necessitate turning one's head through 40°.

Easting (ITM):	321110	Lens:	50mm / Full Frame Sensor	Date:	20/10/2022
Northing (ITM):	242067	Camera:	Canon 1-D Mark II digital SLR	Time:	10:07
Direction of View:	104° W of Grid North	Camera Height:	1.7m Above Ground Level		
Angle of View:	80°				

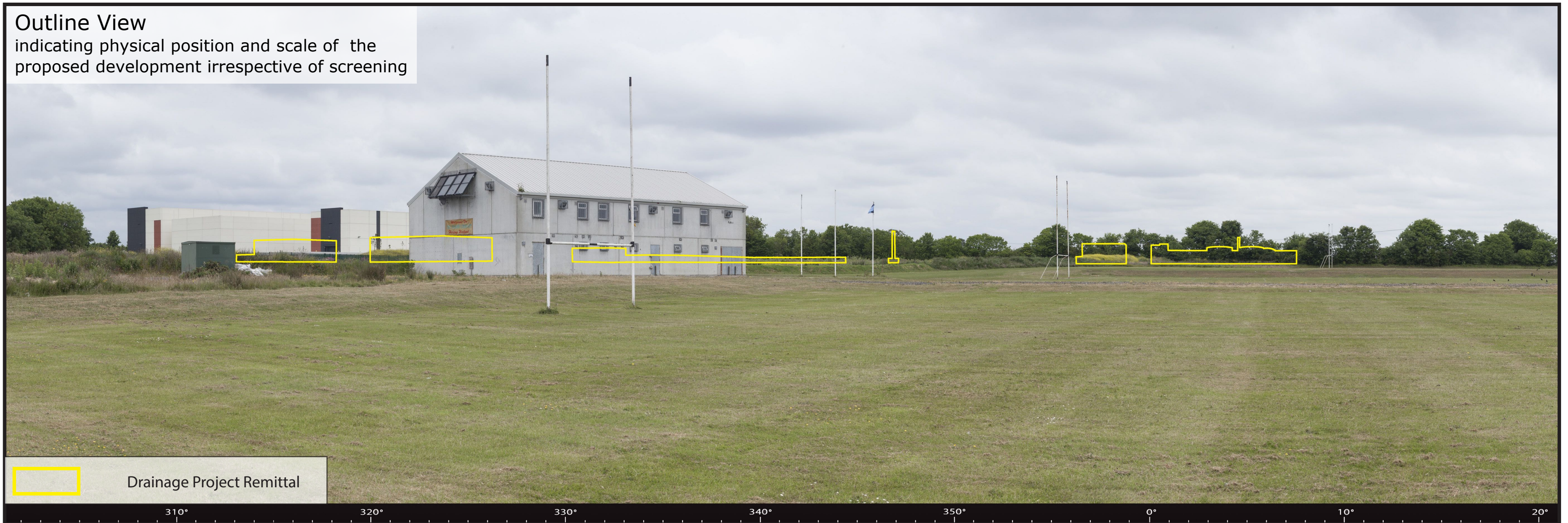


Existing View



Outline View

indicating physical position and scale of the proposed development irrespective of screening



These are 80° panoramic montages captured and presented in accordance with the guidance set by the British Landscape Institute 2011 - Advice Note 01/11.

To view these panoramas on a flat surface one must move from left to right along its length whilst maintaining a perpendicular viewing direction and the specified correct viewing distance of 30cm. To see this entire panoramic scene in reality would necessitate turning one's head through 40°.

Easting (ITM):	319761	Lens:	50mm / Full Frame Sensor	Date:	12/06/2018
Northing (ITM):	241244	Camera:	Canon 1-D Mark II digital SLR	Time:	13:54
Direction of View:	19° W of Grid North	Camera Height:	1.7m Above Ground Level		
Angle of View:	80°				



Montage View
Pre-Mitigation



Montage View
With Mitigation Established



These are 80° panoramic montages captured and presented in accordance with the guidance set by the British Landscape Institute 2011 - Advice Note 01/11.

To view these panoramas on a flat surface one must move from left to right along its length whilst maintaining a perpendicular viewing direction and the specified correct viewing distance of 30cm. To see this entire panoramic scene in reality would necessitate turning one's head through 40°.

Easting (ITM):	319761	Lens:	50mm / Full Frame Sensor	Date:	12/06/2018
Northing (ITM):	241244	Camera:	Canon 1-D Mark II digital SLR	Time:	13:54
Direction of View:	19° W of Grid North	Camera Height:	1.7m Above Ground Level		
Angle of View:	80°				

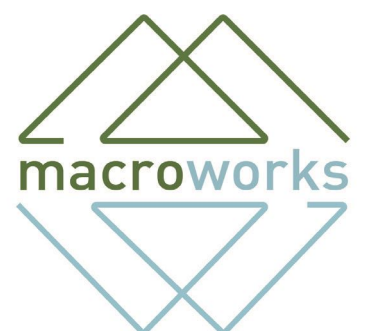




These are 80° panoramic montages captured and presented in accordance with the guidance set by the British Landscape Institute 2011 - Advice Note 01/11.

To view these panoramas on a flat surface one must move from left to right along its length whilst maintaining a perpendicular viewing direction and the specified correct viewing distance of 30cm. To see this entire panoramic scene in reality would necessitate turning one's head through 40°.

Easting (ITM):	320796	Lens:	50mm / Full Frame Sensor	Date:	20/10/2022
Northing (ITM):	241592	Camera:	Canon 1-D Mark II digital SLR	Time:	09:31
Direction of View:	70° W of Grid North	Camera Height:	1.7m Above Ground Level		
Angle of View:	80°				





These are 80° panoramic montages captured and presented in accordance with the guidance set by the British Landscape Institute 2011 - Advice Note 01/11.

To view these panoramas on a flat surface one must move from left to right along its length whilst maintaining a perpendicular viewing direction and the specified correct viewing distance of 30cm. To see this entire panoramic scene in reality would necessitate turning one's head through 40°.

Easting (ITM):	320796	Lens:	50mm / Full Frame Sensor	Date:	20/10/2022
Northing (ITM):	241592	Camera:	Canon 1-D Mark II digital SLR	Time:	09:31
Direction of View:	70° W of Grid North	Camera Height:	1.7m Above Ground Level		
Angle of View:	80°				





These are 80° panoramic montages captured and presented in accordance with the guidance set by the British Landscape Institute 2011 - Advice Note 01/11.

To view these panoramas on a flat surface one must move from left to right along its length whilst maintaining a perpendicular viewing direction and the specified correct viewing distance of 30cm. To see this entire panoramic scene in reality would necessitate turning one's head through 40°.

Easting (ITM):	318897	Lens:	50mm / Full Frame Sensor	Date:	20/10/2022
Northing (ITM):	241006	Camera:	Canon 1-D Mark II digital SLR	Time:	11:15
Direction of View:	29° E of Grid North	Camera Height:	1.7m Above Ground Level		
Angle of View:	80°				





These are 80° panoramic montages captured and presented in accordance with the guidance set by the British Landscape Institute 2011 - Advice Note 01/11.

To view these panoramas on a flat surface one must move from left to right along its length whilst maintaining a perpendicular viewing direction and the specified correct viewing distance of 30cm. To see this entire panoramic scene in reality would necessitate turning one's head through 40°.

Easting (ITM):	308895	Lens:	50mm / Full Frame Sensor	Date:	01/11/2016
Northing (ITM):	238742	Camera:	Canon 1-D Mark II digital SLR	Time:	15:38
Direction of View:	109° E of Grid North	Camera Height:	1.7m Above Ground Level		
Angle of View:	80°				





These are 80° panoramic montages captured and presented in accordance with the guidance set by the British Landscape Institute 2011 - Advice Note 01/11.

To view these panoramas on a flat surface one must move from left to right along its length whilst maintaining a perpendicular viewing direction and the specified correct viewing distance of 30cm. To see this entire panoramic scene in reality would necessitate turning one's head through 40°.

Easting (ITM):	308895	Lens:	50mm / Full Frame Sensor	Date:	01/11/2016
Northing (ITM):	238742	Camera:	Canon 1-D Mark II digital SLR	Time:	15:38
Direction of View	109° E of Grid North	Camera Height:	1.7m Above Ground Level		
Angle of View:	80°				

